

## Accessories

Whether you choose a Reusable or Disposable Collection System, Medela products provide hygienic, user-friendly and economic fluid management. Additionally, we offer you a wide range of accessories to suit your individual suctioning applications and demands.

### Autoclavable canisters 250cc 1500cc (PSU)

for small amounts of suctioned fluids.



### Disposable specimen cup

can easily be attached onto the patient port to collect tissue samples.



### Trolley

for mobile use of the fluid collection systems and accessories.



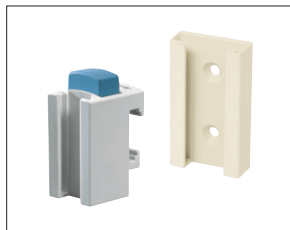
### Disposable filters

protect the pump from overflow, protect the environment from bacteria and neutralize odors.



### Clamholder / wall bracket

for rapid and secure attachment of canister and other accessories onto standard rails or walls.



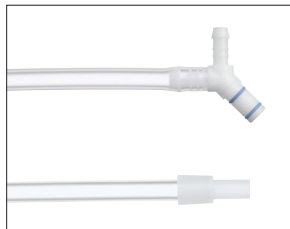
### Tubing

made from silicone or polyvinyl chloride (PVC) with a choice of port connections.



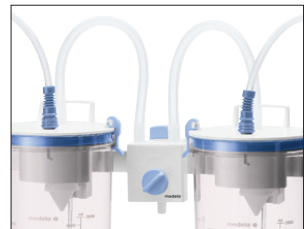
### Serial/tandem connection

for suctioning large volumes of fluid. Automatic switch from one liner to the next.



### Change-over valve with clamholder

for suctioning large volumes of fluid. Manual switch from one liner or canister to the other.



CE 0123

## Medical Vacuum Technology for Healthcare Professionals

**Please contact us or your local Medela representative for details.**

 Medela AG  
Lättichstrasse 4b  
6341 Baar, Switzerland  
www.medela.com

**USA**  
Medela Inc.  
1101 Corporate Drive  
McHenry, IL 60050  
USA  
Phone +1 877 735 1626  
Fax +1 815 363 2487  
suction@medela.com  
www.medelasuction.com

**Canada**  
Medela Inc.  
4160 Sladeview Cres., Unit #8  
Mississauga, Ontario  
L5L 0A1  
Canada  
Toll Free 800 435 8316  
Toll Free Fax 800 995 7867  
info@medela.ca  
www.medela.ca

**Local contact:**

# Fluid Collection



## DISPOSABLE AND REUSABLE COLLECTION SYSTEMS



# Disposable Collection System

## Easy to use

The Medela Disposable Collection System offers a whole range of advantages that makes it easy to implement in the hospital and clinic. Simply place the one-piece liner into the canister and it is ready to use in seconds. As the vacuum connection is located directly on the outer canister, the liner can be conveniently removed and replaced without removing the vacuum tube. A locking clasp keeps the canister securely in place and makes one handed liner removal easy. If large amounts of fluid need to be suctioned, the system can be used in serial or with the change-over valve. Your logistical requirements are reduced by having only two liner sizes, 1500cc and 2500cc.

## Hygienic

The system offers an overflow/bacteria filter, with an additional pre-filter to prevent premature shutoff due to smoke or particles, integrated in each liner as well as a non-return valve with fluid navigation to prevent back-flow and reduce foaming/back-splashing. The material of the liner consists of two layers for durability and odor control. For liners with solidifier, a special feature is the pouch that keeps the solidifier contained until the liner is in use. This means no spillage or inconvenience for the staff.

## Color-coded canister and suction liners with/without solidifier

Distinctive color coding for less confusion: orange liner into orange coded canister; yellow liner into yellow coded canister.



Suction liner and canister 1500cc



Suction liner and canister 2500cc



- (a) Only one vacuum tubing port on canister
- (b) Locking clasp on canister to secure it in holder
- (c) Non-return valve with fluid navigation
- (d) Overflow protection/bacteria filter with splash guard
- (e) 3rd opening for serial/tandem connection
- (f) Handles for left and right-handed people
- (g) Angle piece hinders a kinking of the patient tubing
- (h) Filter chamber with pre-filter and the bacteria/overflow filter

## Fast Facts

- Easy to set up and ready to use in seconds.
- Liner can be removed from canister independently from vacuum tubing.
- Overflow protection/bacteria filter in each liner. The pre-filter prevents premature shutoff due to particles or electrocautery smoke.
- Non-return valve prevents suctioned secretions from flowing back. The fluid navigation reduces foaming.
- Serial/tandem connection to allow suctioning of large volumes of fluid.
- Solidifier in pouch keeps solidifier contained until liner is in use.
- 1500cc and 2500cc for easy storage and logistics.

# Reusable Collection System

## Simple handling

The Medela Reusable Collection System is made out of durable, high quality components. For customers who prefer a reusable system, this system facilitates the collection of suctioned fluids. It consists of various autoclavable polysulfone (PSU) suction canisters and lids with integrated overflow protection. A big advantage is that four different canister sizes, 1000, 2000, 3000 and 5000cc's share one lid size to make handling easy and reduce logistics.

## Flexible use

Based on our long experience in Medical Vacuum Technology, we design and manufacture our suction pumps, Fluid Collection Systems and accessories to fit a wide variety of different clinical settings and applications. Whether you need a complete system or a specific component, we are happy to advise.



- (a) + (b) Clearly distinctive patient (a) and vacuum (b) ports
- (c) Mechanical overflow protection
- (d) Highly visible graduation markings

Reusable canisters of 1000, 2000, 3000 and 5000cc's

### Fast Facts

- Flexible system with multiple components and accessories to fit to your needs.
- Canisters, made of high-grade, shock-resistant polysulfone.
- Polysulfone canisters are suitable for all normal disinfection and sterilization processes.
- Easy to read graduated markings to indicate fluid volume.
- Uniform lids fit to all canister sizes, made from reinforced polyamide with santoprene seal.
- Mechanical overflow protection integrated into lid.